

# VISE™ Parental Control

## Getting Started



**Table of contents**

- Introduction..... 2
- Administrator and users..... 2
- The login screen after VISE™ installation..... 2
- Installing updates..... 4
- Configuration ..... 4
  - Creating users ..... 5
  - Creating profiles ..... 5
  - Editing profiles ..... 6
    - Computer usage ..... 6
    - Internet usage..... 6
    - General Internet Control ..... 9
    - Time Control .....10
    - Screen Shots .....10
  - Linking users to profiles .....11
  - Adding another user .....12
- VISE™ user’s side.....13
- More information.....13

## **Introduction**

Dear user of VISE™ Parental Control!

We want to thank you for installing this program on your computer. This manual serves as a guide to help you get started with the use of VISE™ so you can achieve what the program has been designed for: protecting your children.

## **Administrator and users**

Part of the program is to be used only by the administrator (Admin), the other part is meant for the users. Parents will usually act as administrator and their children as users.

The administrator can set the required restrictions for users. Examples are:


- The (categories of) websites that users may/may not visit;
- The persons the users may/may not chat with;
- The times the computer may/may not be used;
- The programs on the computer that one or more users may not start.

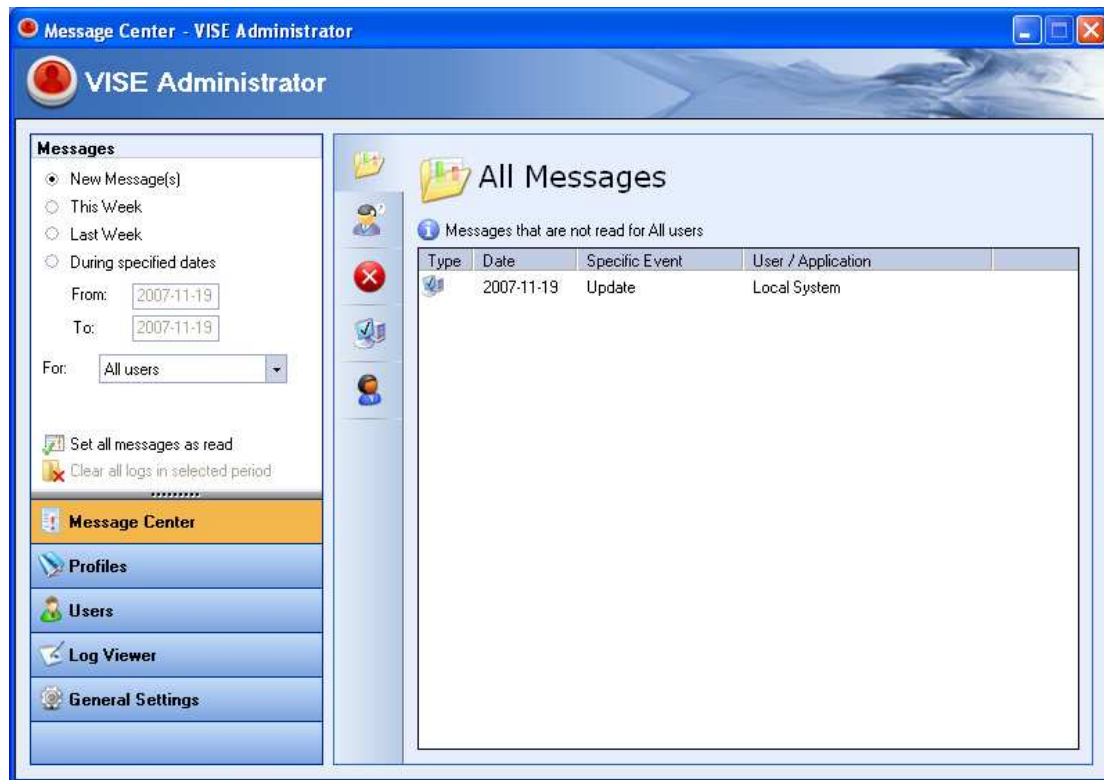
The administrator can configure separate settings for each user. This may, for example, depend on the age of the various users. The administrator can also include multiple users in one profile and assign the same rights to all.

The user section of VISE™ provides information on the user's specific restrictions and computer usage. The user cannot change the rules set by the administrator. However, the user can request modification of a certain setting by the administrator through VISE™. For example, certain websites that are blocked by VISE™ that the user wants to access.

## **The login screen after VISE™ installation**

When VISE™ has been installed and the computer has been restarted, your Windows login screen and/or a VISE™ login screen may be displayed (depending on the Windows configuration and the selected VISE™ installation method: Standard Login or Integrated Windows Login). In the VISE™ login screen you should log in using the password you have defined during the installation.

You will see your regular desktop. In the bottom right hand corner, next to the clock, the following new icon is displayed: . Right click this icon and select *Launch VISE*. The following screen will be displayed:

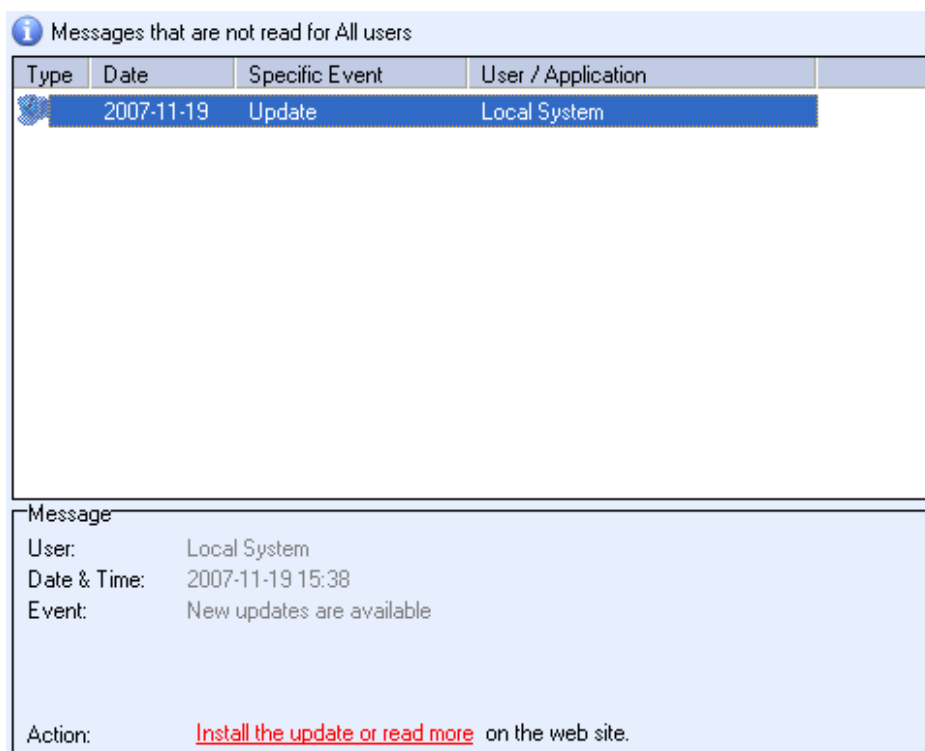


Did you have to log in twice after you restarted the computer? If so, it would be advisable to have VISE™ take care of the Windows login: after the Windows start-up you will immediately go to the VISE™ login screen. To achieve this, go to *General Settings* in the above VISE Administrator console, select *Login Options* in the upper left hand corner, select *Standard Login* and enable *Automatic Windows Login*. Specify the Windows account for which VISE™ should execute the login procedure.



## Installing updates

Return to the *Message Center* in the VISE Administrator console. After VISE™ has been installed, the software will check for new updates (an addition to the filter data) or upgrades of the program itself. When there are updates/upgrades, an *Update message* will be displayed. In the VISE Administrator console below a message was displayed on 5 November 2007 indicating that an update is available. Click the message for more information.



Next click: *Install the update or read more*. You will be redirected to the VISE™ website ([www.kidscontrol.eu](http://www.kidscontrol.eu)) where you will find information on the available upgrades (of the program) or updates (of the filters) for VISE™. If, for example, an update file is available, you can save it on your desktop and import it into the VISE Administrator console. Follow the instructions provided on the website.

## Configuration

VISE™ can now be configured. Two things are essential:

You should create a separate user for each child that is allowed to use the computer and you should select a profile for each user containing the specified settings.

This depends on your specific situation, you can also decide to create a general user for all your children or to create only one profile and link this to all users. We encourage you to think the situation through carefully. Children between the ages 8-10, for example, probably should be allowed to do less on the Internet than children between the ages of, for example, 14-16. In that case you could create two profiles.

Without your configuration VISE™ will block all websites already predefined in the program, but there are no further default restrictions.

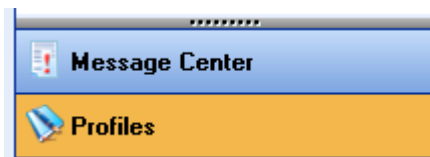
## Creating users

First you should create the users<sup>1</sup>. In our example we assume you have two children: Jim aged 11 and Charlotte aged 16. You want to have the computer display a login screen containing their names and you want them to have to enter a password to use the computer. You want to use different filter rules for both users.

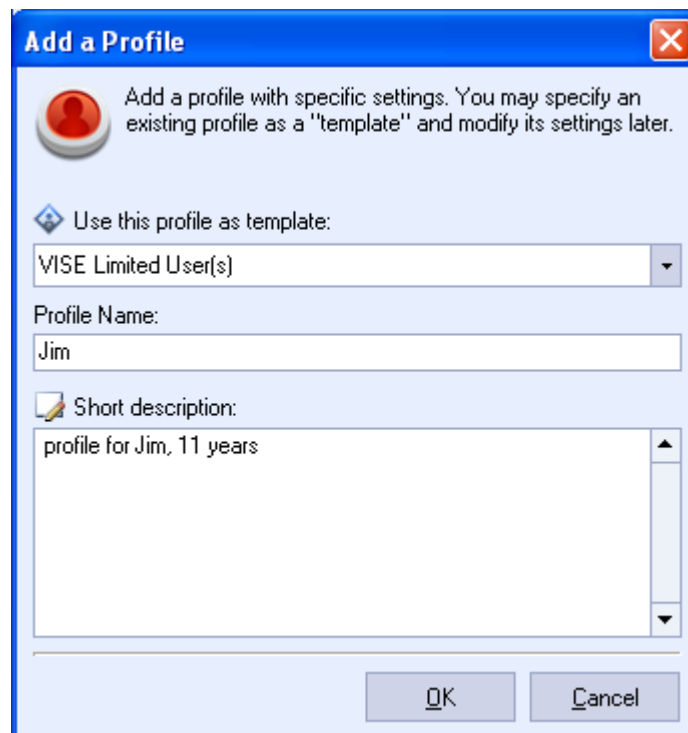
## Creating profiles

Before you create your children in VISE™ as new users of your computer, it would be advisable to first create their profile (containing settings as to what they are/are not allowed to do), because it will be linked to them as users.

Select the *Profiles* option on the left in the VISE Administrator console.

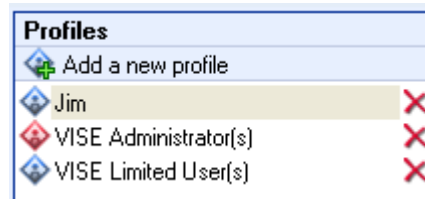


Select the option *Add a new profile* in the upper left hand corner of the screen that is displayed. Enter a profile name, a short description of the profile, if required, and click OK.



<sup>1</sup> We assume you have installed VISE™ and have opted for Standard Login, i.e., VISE™ manages the users. If you have installed VISE™ opting for Integrated Windows Login, Windows manages the users and you will not be able to add users to VISE™. You can, however, link the users to profiles.


After a few seconds the profile Jim is displayed in the list of existing profiles.




## Editing profiles

You can edit this profile to indicate what Jim is and is not allowed to do on this computer.

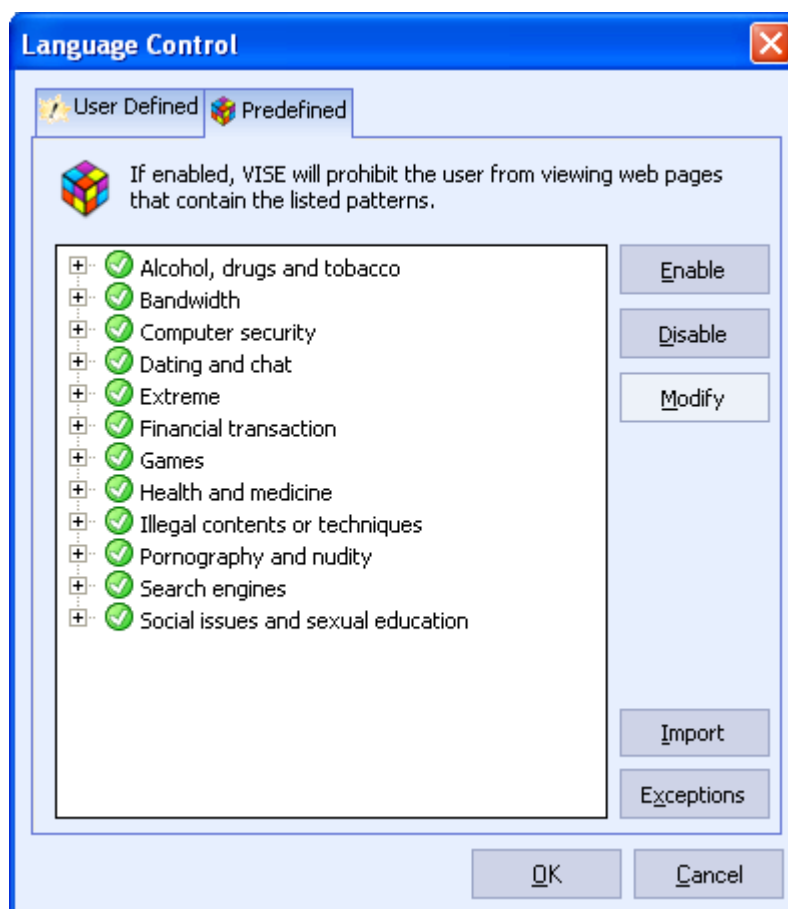
### Computer usage

When you click the icon *Computer Usage Control* (  ) you can specify the programs Jim is not allowed to start on your computer, for example, certain games or financial applications. You can also specify which files or folders Jim is not allowed to open, for example, a spreadsheet containing an overview of your expenses.

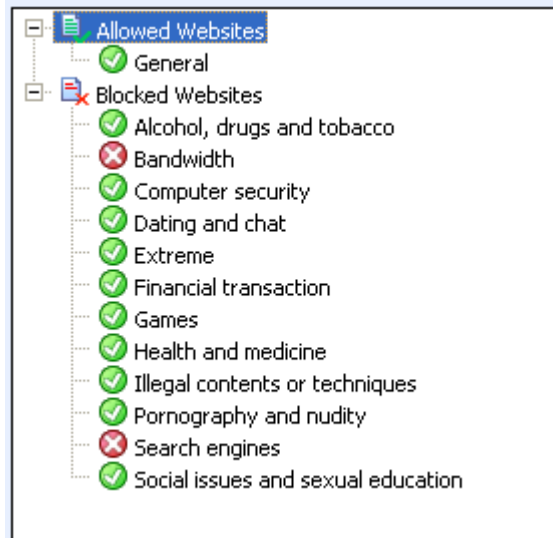
### Internet usage

By clicking the next icon (  ) you open *Internet Parental Control*.

At the first option, *Language Control*, you can specify which website categories VISE™ should check for inappropriate words or phrases. Most categories are enabled by default. If you make no changes, VISE™ will block all websites containing words that fall into the various categories.

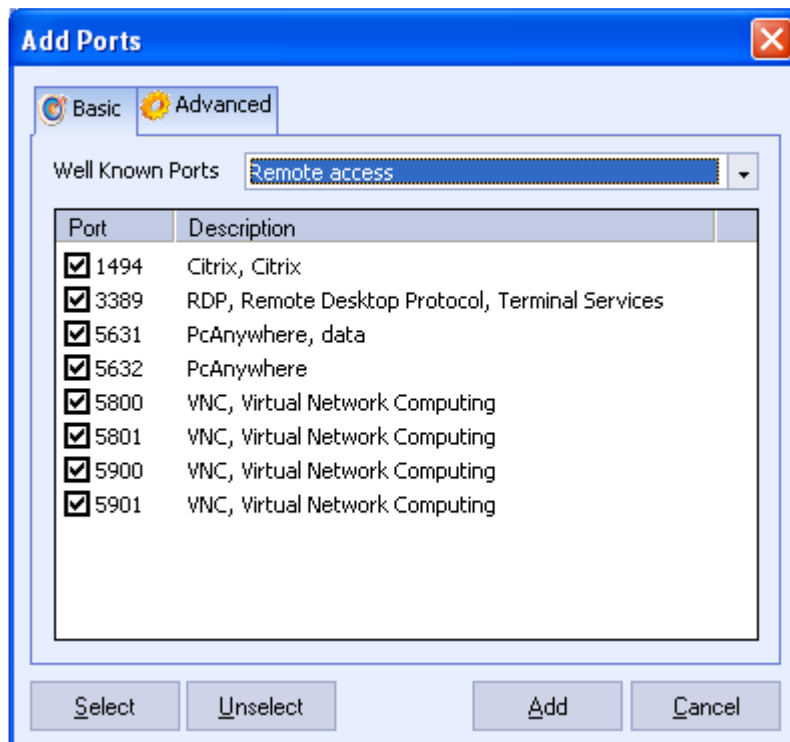


The next option is *Web Browsing Control*. Here you can specify websites that may/may not be visited. Here too the websites are categorised. All websites that fall within one of the predefined categories are blocked by default, with the exception of the categories *Bandwidth* and *Search engines*.



Here too you need not change anything for the Jim profile.<sup>2</sup>

The next option, *Port Control*, is comparable to a firewall. You can specify which ports on your computer can be used and which ones should be blocked. In our example we do not want anyone to gain remote control of the computer while Jim is logged in. Therefore, we block all ports that have to do with *Remote access*. Software using these ports will be blocked:



<sup>2</sup> Note that the list *Allowed websites* contains the category *General*. In this category you can include websites that should always be allowed, even when they appear in one of the categories in the list *Blocked websites*.

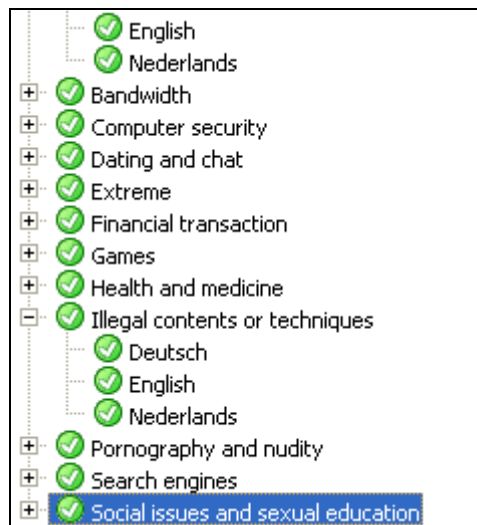
Click *Add* and check the box  Block ports listed below. in the next screen. VISE™ will ensure remote access by third parties is impossible for the profile *Jim*.

The last option, *Chat Control*, is very important. Chatting is one of the major reasons for children to use the computer. You can add addresses of those with whom Jim (in our example) may chat. When adding a contact, you can also indicate whether Jim may exchange files (pictures, music, documents, etc.) with that person.

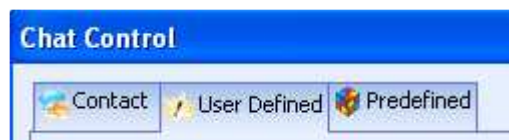


Do not forget to check the box  Enable chat contacts control.

In *Chat Control* words have been defined that are considered sensitive or inappropriate. These too are categorised. Inappropriate words are blocked<sup>3</sup>; the recipient of the chat message will see asterisks (\*\*\*\*\*). This works two-ways. You can indicate of which of the predefined categories (and languages) you want to filter words.

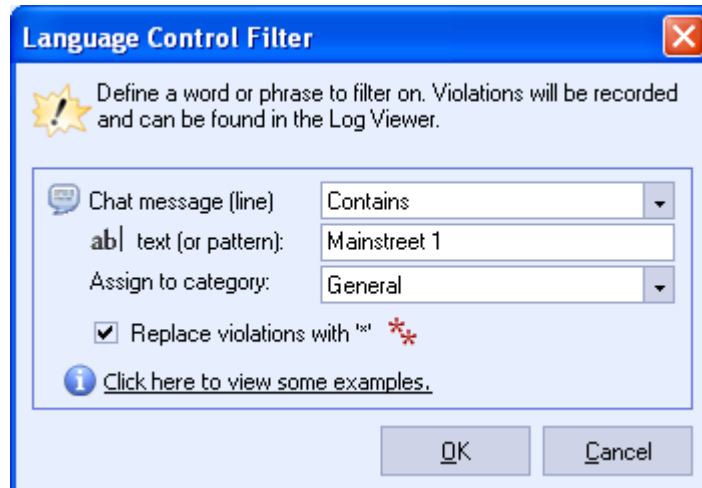


You can also specify words yourself that should be filtered, for example personal data that you do not want to be made known to others through chatting. Click the tab *User Defined* in the *Chat Control* console.

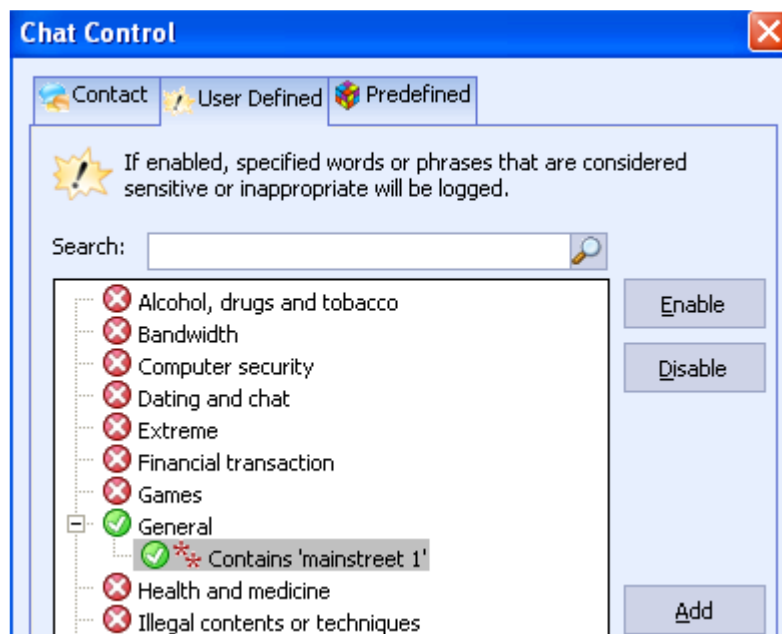


Click *Add* on the right and enter the word you want filtered. In our example we have selected the private address:

<sup>3</sup> Sensitive words are not blocked but their usage is registered.



VISE™ now detects that you have added a word to a specific category and will automatically activate that category:



In future, when your child specifies the home address, the recipient will only see asterisks instead of the actual address.

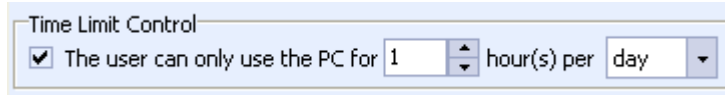
Using the *Chat Control* console you can also specify whether VISE™ should save the contents of the chat messages. If so, check the box  **Log chat messages**. The chat messages can be viewed using the menu option *Log Viewer*.

### **General Internet Control**

The next option for further setting up Jim's profile is *General Internet Control* (🌐). This section can be used to protect Internet Explorer on your computer. You can deny Jim access to various tabs and make sure that the major Internet Explorer settings remain intact so that Internet Explorer cannot be manipulated by malicious programs.

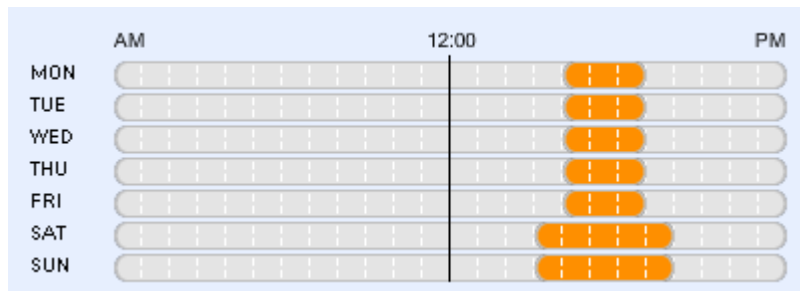
### Time Control

The next option for Jim’s profile is also very important: *Time Control*. In our example we want to make sure the 11-year-old Jim cannot use the computer for an unlimited duration. It is not for us to determine how much time you as a parent should allow your children to spend on the computer. This varies with personal situations and wishes. In our example we limit Jim’s time to 1 hour per day.



Time Limit Control  
 The user can only use the PC for 1 hour(s) per day

Jim can select that hour himself, as long as it falls between 16:00 and 19:00 on weekdays and between 15:00 and 20:00 during the weekend.



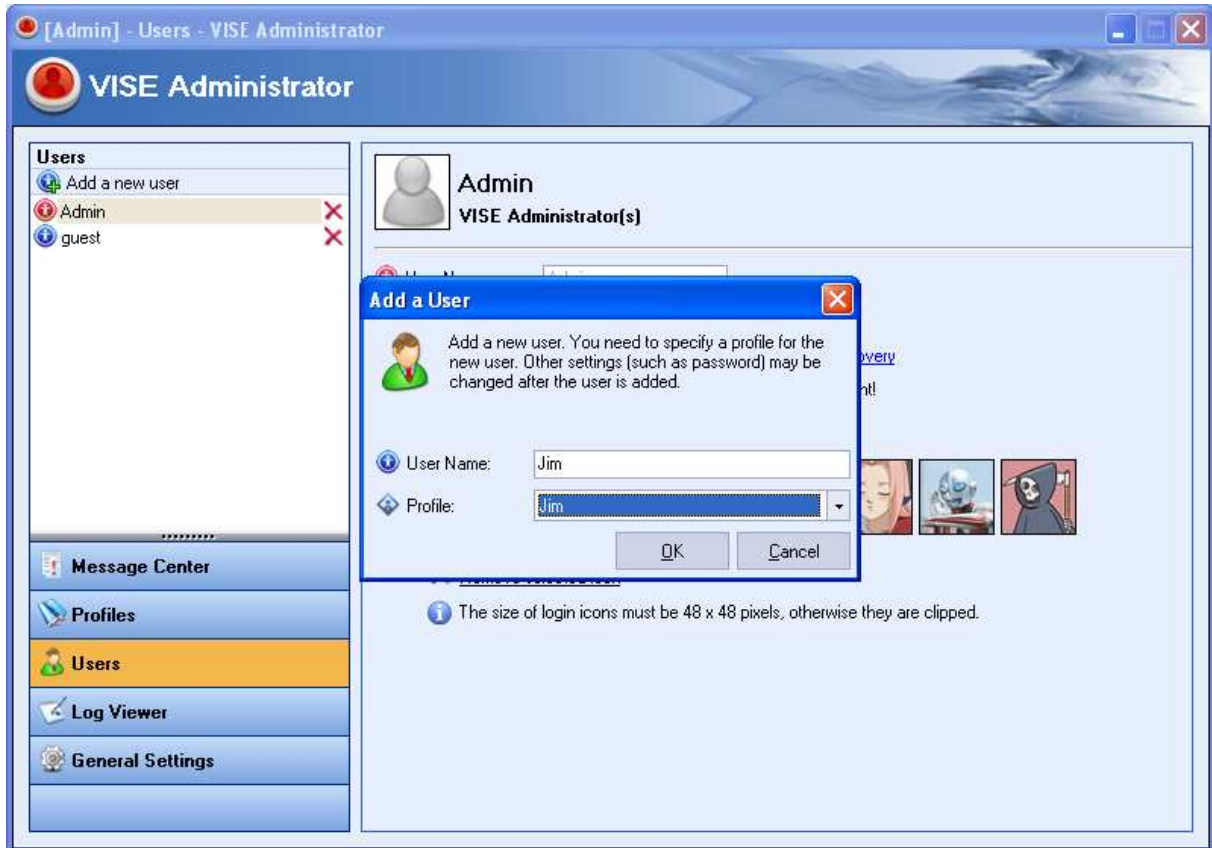
### Screen Shots

The last option for Jim’s profile has to do with making screenshots. Screenshots are snapshots of the screen, as if a picture of the screen is taken with a camera. These screenshots are not visible to the user; they are made automatically without the user’s knowledge and outside the user’s influence. The VISE™ administrator can view these screenshots using the option *Log Viewer* in the main menu.

## Linking users to profiles

Jim's profile has now been created.

Next we have to create the user Jim. Select the option *Users* on the left in the VISE Administrator console. A new menu will be displayed. Select *Add a new user*.

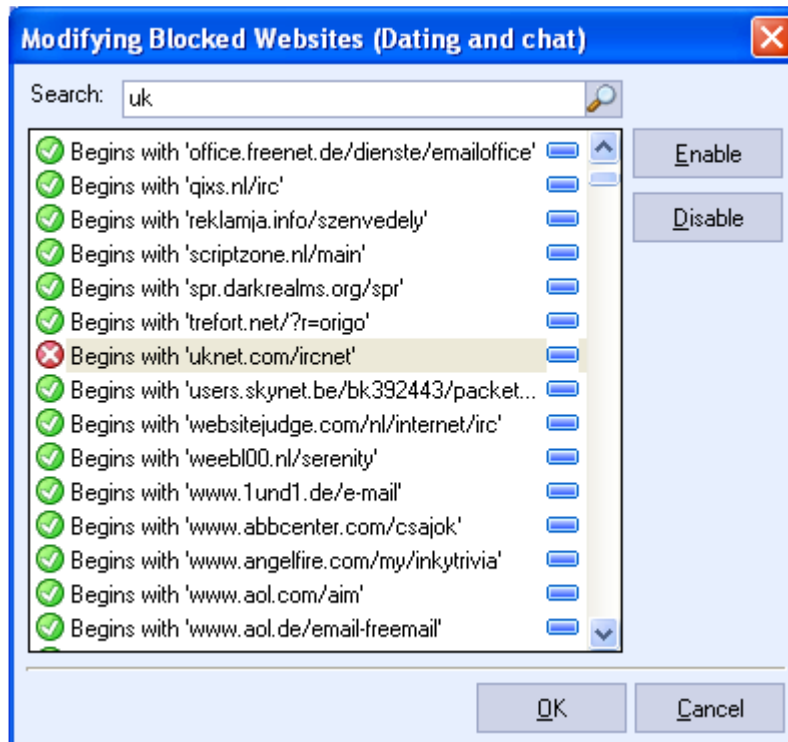


As user name we have selected Jim and as profile Jim's profile. We select a password and a login icon. Now user Jim with his own profile has been created and is available in VISE™.



## Adding another user

We repeat the same steps for Charlotte but opt to grant her more rights and possibilities, mainly in the *Time Control* area. We can also grant her access to categories that are blocked by default, for example, access to certain chat sites.



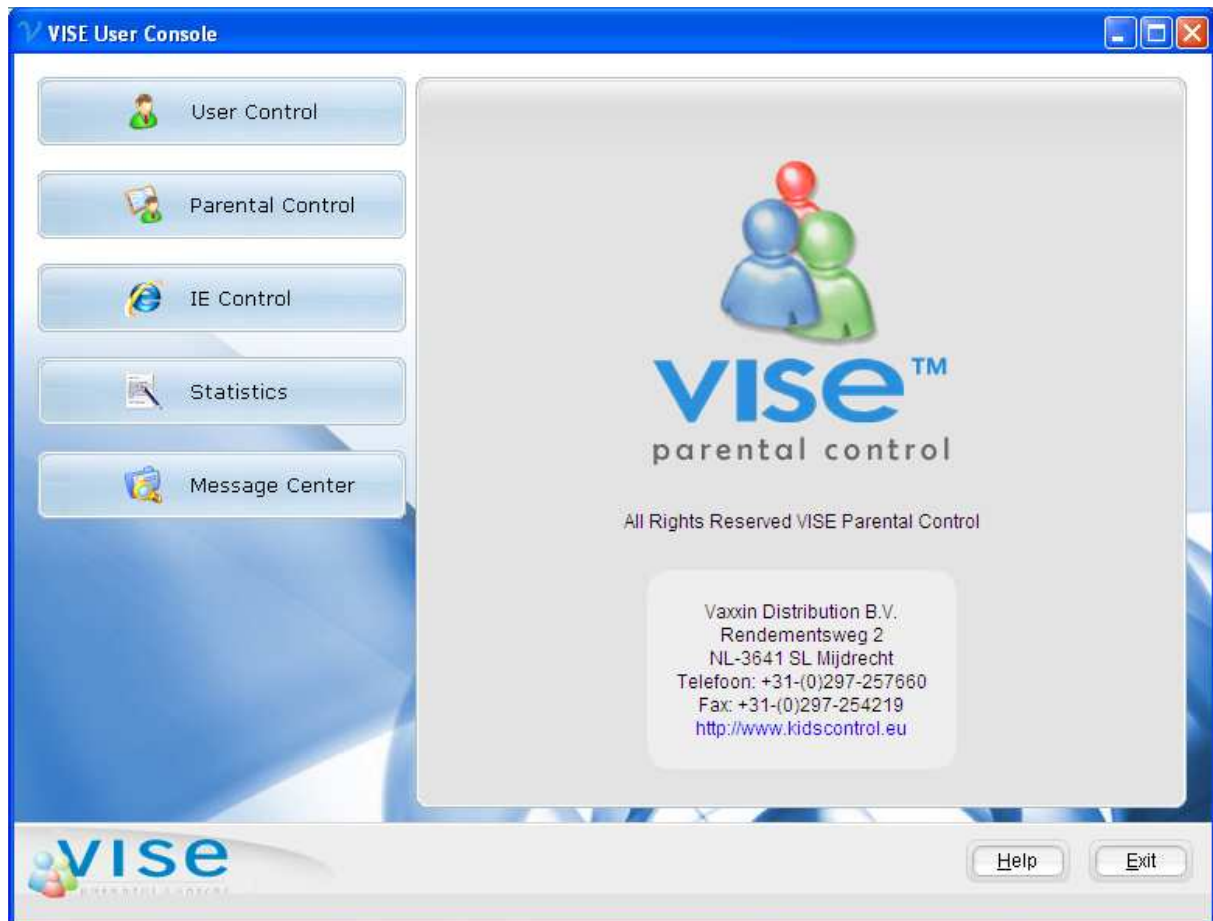
In our example Charlotte now has access to websites starting with “uknet.com/ircnet”, the other sites are blocked. You can add your own sites in the same way as you have added a word in Jim’s profile.

From now on, whenever the computer is started the children can log in using their own name and password.

## **VISE™ user's side**

Now that the newly created users can log in, we want to show you what they can do using the user's side of VISE™.

When the user starts VISE™, the following screen is displayed:



When browsing through the various options, the user will see that in most cases he/she cannot change much, at any rate no essential settings. The user can, however, change his/her own password and icon, view statistics and check the *Message Center* to see if any authorisation requests have been approved or denied by the administrator. Every user can send these authorisation requests to the VISE™ administrator. This may be, for example, a request to be able to visit a certain website that has been blocked by VISE™. The VISE™ administrator determines whether the request is approved or denied.

## **More information**

You can find more information on VISE™ on [www.kidscontrol.eu](http://www.kidscontrol.eu). In the section (*Online Help/FAQ's*) the program is explained further.